

**Report No.:** 238523186k6 001

Page 1 of 6

**Client:** CHIMEI Corporation  
No.398, Sec. 1, Zhongzheng Rd., Rende Dist., Tainan City 717010, Taiwan,  
R.O.C.

**Test item(s):** POLYCARBONATE

**Identification/Model No(s):** WONDERLITE® PC-122

**Sample obtaining method:** Sending by customer

**Condition at delivery:** Test item complete and undamaged.

**Sample receiving date:** 2021-12-01

**Testing period:** 2021-12-01 – 2022-01-03

**Place of testing:** TÜV Rheinland (Shanghai) Co. Ltd.

**Test specification:**

According to RoHS (recast): Restriction of the Use of Certain Hazardous Substances in Electrical and Electronic Equipment, 2011/65/EU Annex II and its amendment Directive (EU) 2015/863: Total Content of Lead, Cadmium, Mercury, Chromium VI, Polybrominated Biphenyls, Polybrominated Diphenyl Ethers; and Benzylbutyl phthalate (BBP), Dibutyl phthalate (DBP), Bis(2-ethylhexyl) phthalate (DEHP), Diisobutyl phthalate (DIBP)

Halogen (Fluorine, Chlorine, Bromine, Iodine)

**Test result:**

Pass

Refer to result page

**Other information:** Refers to TÜV test report no.: 238523186k5 001.

**For and on behalf of**  
**TÜV Rheinland Taiwan Ltd.**

*Arthur Cheng*

Arthur Cheng/Project Manager  
Name/Position

2022-01-03  
Date



Sample information is provided by customer. Test result is drawn according to the kind and extent of tests performed.  
This test report relates to the above mentioned test sample. Without permission of the test center this test report is not permitted to be duplicated in extracts. This test report does not entitle to carry any safety mark on this or similar products.  
"Decision Rule" document announced in our website (<https://www.tuv.com/landingpage/en/qm-gcn/>) describes the statement of conformity and its rule of enforcement for test results are applicable throughout this test report..

Test Report No.: 238523186k6 001

Page 2 of 6

Test Method : Total Cadmium, Lead, Mercury, Chromium  
 - Ref. to IEC 62321-4:2013 and IEC 62321-5:2013  
 Chromium (VI)  
 - For Metal material - Ref. to IEC 62321-7-1:2015  
 - For Plastic or Electronic material - Ref. to IEC 62321-7-2:2017  
 - For Leather material - Ref. to EN ISO 17075-1:2017  
 PBBs, PBDEs - Ref. to IEC 62321-6:2015

Sample Material Lab.-No.		RL	WONDERLITE® PC-122 plastic/transparent TCL211201-95
Cadmium (Cd)	mg/kg	2	< RL
Lead (Pb)	mg/kg	2	< RL
Mercury (Hg)	mg/kg	2	< RL
Chromium VI (Cr VI)*	mg/kg	8	< RL
<b>Sum of Polybrominated biphenyls (PBBs)</b>	mg/kg	-	< RL
Monobromobiphenyl	mg/kg	5	< RL
Dibromobiphenyl	mg/kg	5	< RL
Tribromobiphenyl	mg/kg	5	< RL
Tetrabromobiphenyl	mg/kg	5	< RL
Pentabromobiphenyl	mg/kg	5	< RL
Hexabromobiphenyl	mg/kg	5	< RL
Heptabromobiphenyl	mg/kg	5	< RL
Octabromobiphenyl	mg/kg	5	< RL
Nonabromobiphenyl	mg/kg	5	< RL
Decabromobiphenyl	mg/kg	5	< RL
<b>Sum of Polybrominated diphenyl ethers (PBDEs)</b>	mg/kg	-	< RL
Monobromodiphenyl ether	mg/kg	5	< RL
Dibromodiphenyl ether	mg/kg	5	< RL
Tribromodiphenyl ether	mg/kg	5	< RL
Tetrabromodiphenyl ether	mg/kg	5	< RL
Pentabromodiphenyl ether	mg/kg	5	< RL
Hexabromodiphenyl ether	mg/kg	5	< RL
Heptabromodiphenyl ether	mg/kg	5	< RL
Octabromodiphenyl ether	mg/kg	5	< RL
Nonabromodiphenyl ether	mg/kg	5	< RL
Decabromodiphenyl ether	mg/kg	5	< RL

**Notes:**

- < = less than
- RL = Reporting Limit
- n.a. = not applicable
- mg/kg = milligram per kilogram
- \* Once the total Cr content in metal/ plastic or electronic sample is found to be exceeded the limit, the Cr (VI) content will be confirmed with reference to IEC 62321-7-1:2015/ IEC 62321-7-2:2017

	Cd	Cr(VI)	Pb	Hg	PBBs	PBDEs
<b>Maximum permissible Limit acc. to 2011/65/EU (mg/kg)</b>	100	1000	1000	1000	1000	1000

Test Report No.: 238523186k6 001

Page 3 of 6

Test Method : BBP/DBP/DEHP/DIBP - Ref. to IEC 62321-8:2017  
 Halogen - Following EN 14582; determination by I.C.

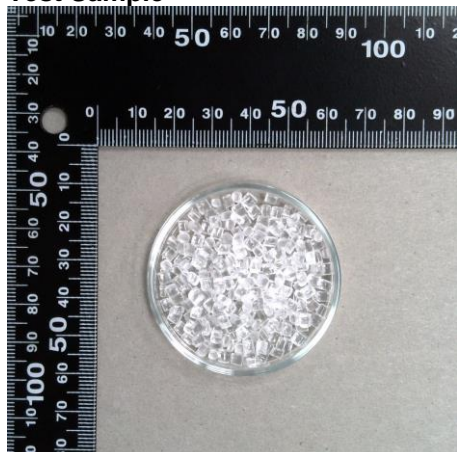
Sample		RL	WONDERLITE® PC-122
Material			plastic/transparent
Lab.-No.			TCL211201-95
Benzylbutylphthalate (BBP)	mg/kg	50	< RL
Dibutylphthalate (DBP)	mg/kg	50	< RL
Diethylhexylphthalate (DEHP)	mg/kg	50	< RL
Diisobutylphthalate (DIBP)	mg/kg	50	< RL

	BBP	DBP	DEHP	DIBP
<b>Maximum permissible Limit acc. to (EU) 2015/863 (mg/kg)</b>	1000	1000	1000	1000

Sample			WONDERLITE® PC-122
Material			plastic/transparent
Lab.-No.			TCL211201-95
Halogen	Unit	RL	Result
Fluorine (F)	mg/kg	50	< RL
Chlorine (Cl)	mg/kg	50	< RL
Bromine (Br)	mg/kg	50	< RL
Iodine (I)	mg/kg	50	< RL

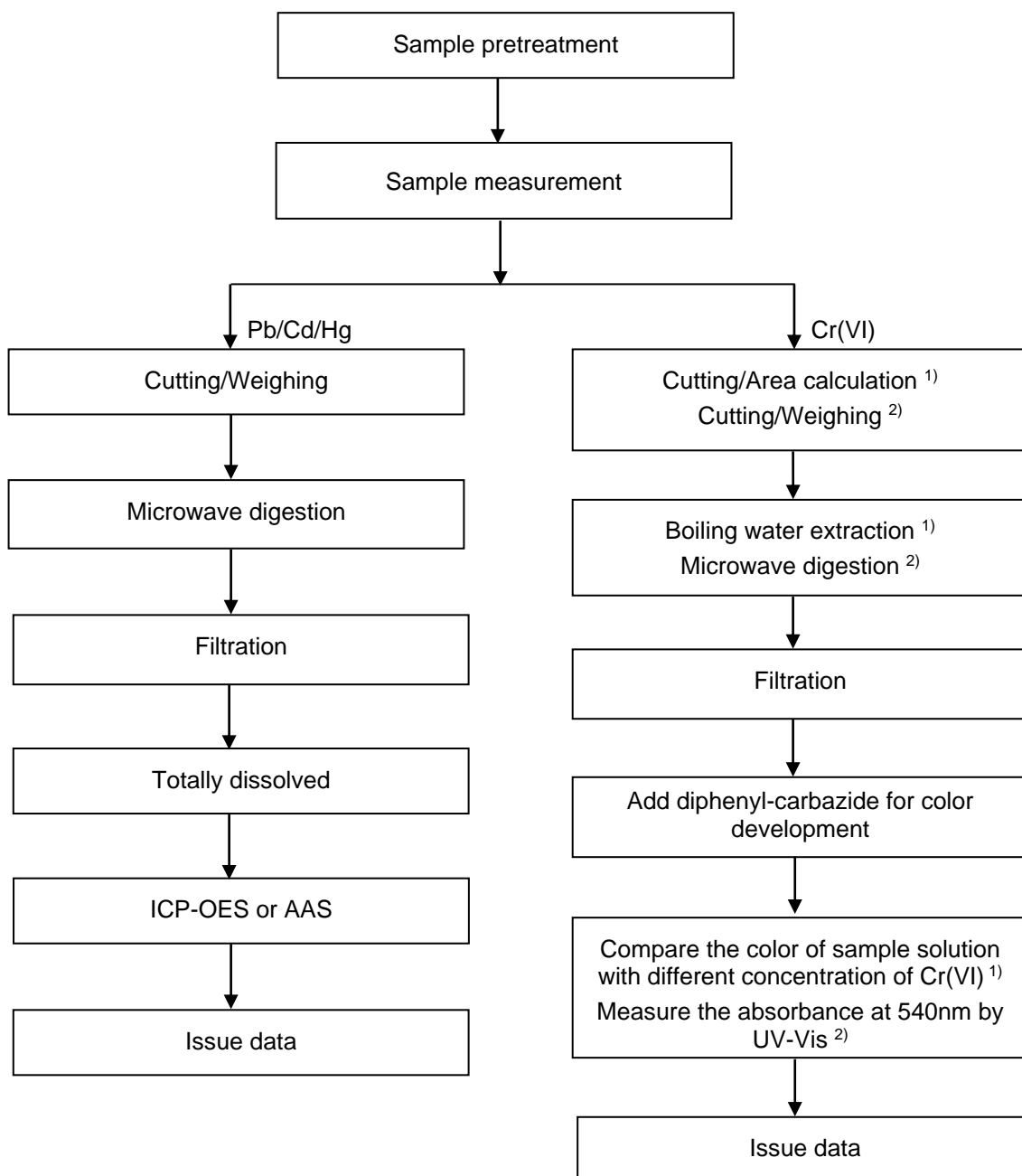
Notes:

- < = less than
- RL = Reporting Limit
- n.a. = not applicable
- mg/kg = milligram per kilogram

**Test Sample**

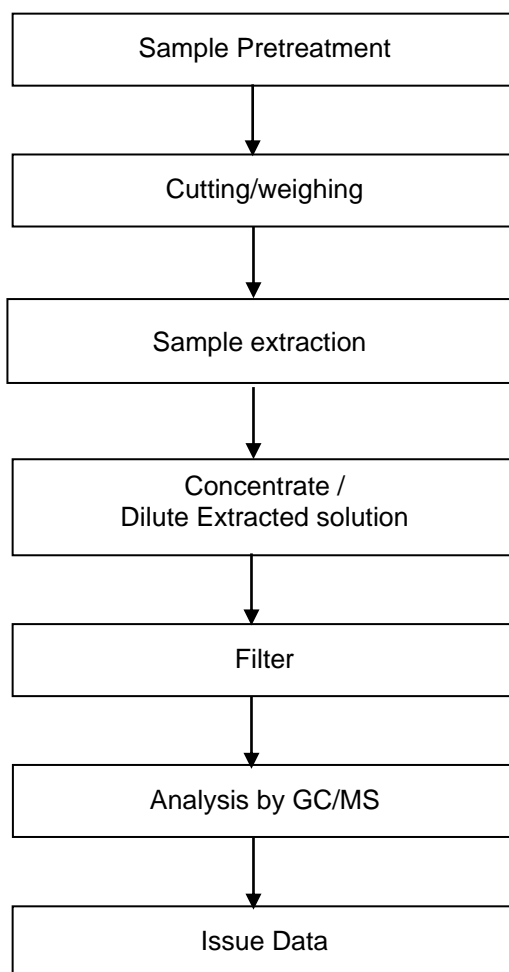
**Testing procedure:**

RoHS (Pb, Cd, Hg, Cr(VI))

Notes: <sup>1)</sup> For metallic material<sup>2)</sup> For non-metallic material

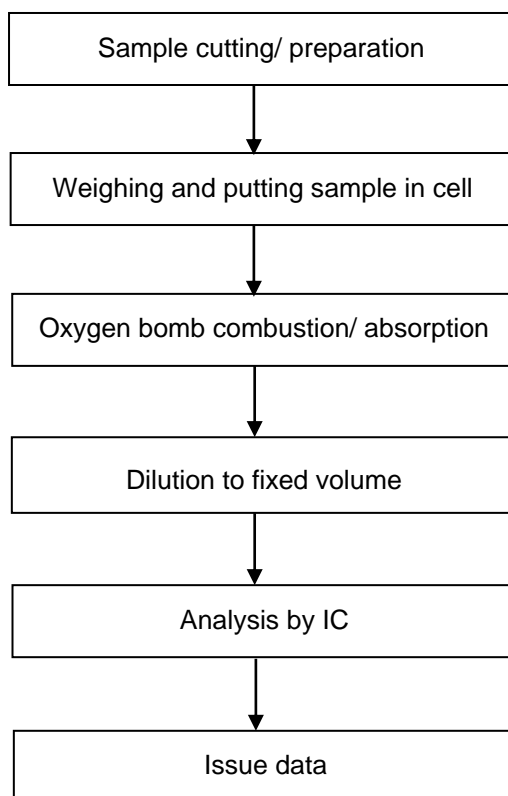
**Testing procedure:**

RoHS (PBBs/PBDEs, DEHP/DBP/BBP/DIBP)



**Testing procedure:**

Halogen



--- End of Test-Report ---