
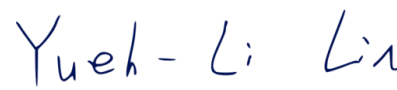


Prüfbericht - Nr.: 238495049i4 001 <i>Test Report No.:</i>			Seite 1 von 5 <i>Page 1 of 5</i>		
Auftraggeber: <i>Client:</i>			Chi Mei Corporation No.398, Sec. 1, Zhongzheng Rd., Rende Dist., Tainan City 717010, Taiwan, R.O.C.		
Gegenstand der Prüfung: ACRYLONITRILE-STYRENE COPOLYMER <i>Test Item:</i>					
Bezeichnung: <i>Identification:</i>			KIBISAN® PN-127 L150 FG		
Anlieferungszustand: <i>Delivery condition:</i>		apparent good		Eingangsdatum: <i>Date of Receipt:</i>	
				2020-12-04	
Prüfort: <i>Testing location:</i>			TÜV Rheinland (Shanghai) Co. Ltd.		
Prüfgrundlage: <i>Test specification:</i>			According to RoHS (recast): Restriction of the Use of Certain Hazardous Substances in Electrical and Electronic Equipment, 2011/65/EU Annex II and its amendment Directive (EU) 2015/863: Total Content of Lead, Cadmium, Mercury, Chromium VI, Polybrominated Biphenyls, Polybrominated Diphenyl Ethers; and Benzylbutyl phthalate (BBP), Dibutyl phthalate (DBP), Bis(2-ethylhexyl) phthalate (DEHP), Diisobutyl phthalate (DIBP)		
Prüfergebnis: <i>Test result:</i>			According to the kind and extend of tests performed the above mentioned test item passed the test specification.		
geprüft: tested by:			kontrolliert: checked by:		
					
2021-01-04 Arthur Cheng /Project Manager			2021-01-04 Yueh-Li Lin /Senior Project Coordinator		
Datum <i>Date</i>	Name/Stellung <i>Name/Position</i>	Unterschrift <i>Signature</i>	Datum <i>Date</i>	Name/Stellung <i>Name/Position</i>	Unterschrift <i>Signature</i>
Sonstiges/ Other Aspects: Test period: 2020-12-04 – 2021-01-04 Refers to TÜV test report no.: 238495049i5 001					
Abkürzungen: ok / P = entspricht Prüfgrundlage fail / F = entspricht nicht Prüfgrundlage n.a. / N = nicht anwendbar			Abbreviations: ok / P = passed fail / F = failed n.a. / N = not applicable		
Produktinformationen werden vom Kunden bereitgestellt. Das Testergebnis wird nach Art und Umfang der durchgeführten Tests gezogen. Dieser Prüfbericht bezieht sich auf das oben genannte Prüfmuster. Ohne Genehmigung des Testzentrums darf dieser Testbericht nicht in Auszügen vervielfacht werden. Dieser Prüfbericht berechtigt nicht zum Tragen eines Prüfzeichens auf diesem oder ähnlichen Produkten. <i>Sample information is provided by customer. Test result is drawn according to the kind and extent of tests performed. This test report relates to the above mentioned test sample. Without permission of the test center this test report is not permitted to be duplicated in extracts. This test report does not entitle to carry any safety mark on this or similar products.</i>					

Test Report No. : 238495049i4 001
 Customer : Chi Mei Corporation
 Test Method : Total Cadmium, Lead, Mercury, Chromium
 - Ref. to IEC 62321-4:2013 and IEC 62321-5:2013
 Chromium (VI)
 - For Metal material - Ref. to IEC 62321-7-1:2015
 - For Plastic or Electronic material - Ref. to IEC 62321-7-2:2017
 - For Leather material - Ref. to EN ISO 17075-1:2017
 PBBs, PBDEs - Ref. to IEC 62321-6:2015

2021-01-04

Sample		RL	KIBISAN® PN-127 L150 FG
Material			plastic/transparent
Lab.-No.			TCL201204-77
Cadmium (Cd)	mg/kg	2	< RL
Lead (Pb)	mg/kg	2	< RL
Mercury (Hg)	mg/kg	2	< RL
Chromium VI (Cr VI)*	mg/kg	8	< RL
Sum of Polybrominated biphenyls (PBBs)	mg/kg	-	< RL
Monobromobiphenyl	mg/kg	5	< RL
Dibromobiphenyl	mg/kg	5	< RL
Tribromobiphenyl	mg/kg	5	< RL
Tetrabromobiphenyl	mg/kg	5	< RL
Pentabromobiphenyl	mg/kg	5	< RL
Hexabromobiphenyl	mg/kg	5	< RL
Heptabromobiphenyl	mg/kg	5	< RL
Octabromobiphenyl	mg/kg	5	< RL
Nonabromobiphenyl	mg/kg	5	< RL
Decabromobiphenyl	mg/kg	5	< RL
Sum of Polybrominated diphenyl ethers (PBDEs)	mg/kg	-	< RL
Monobromodiphenyl ether	mg/kg	5	< RL
Dibromodiphenyl ether	mg/kg	5	< RL
Tribromodiphenyl ether	mg/kg	5	< RL
Tetrabromodiphenyl ether	mg/kg	5	< RL
Pentabromodiphenyl ether	mg/kg	5	< RL
Hexabromodiphenyl ether	mg/kg	5	< RL
Heptabromodiphenyl ether	mg/kg	5	< RL
Octabromodiphenyl ether	mg/kg	5	< RL
Nonabromodiphenyl ether	mg/kg	5	< RL
Decabromodiphenyl ether	mg/kg	5	< RL

Notes:

- < = less than
- RL = Reporting Limit
- n.a. = not applicable
- mg/kg = milligram per kilogram
- * Once the total Cr content in metal/ plastic or electronic sample is found to be exceeded the limit, the Cr (VI) content will be confirmed with reference to IEC 62321-7-1:2015/ IEC 62321-7-2:2017

	Cd	Cr(VI)	Pb	Hg	PBBs	PBDEs
Maximum permissible Limit acc. to 2011/65/EU (mg/kg)	100	1000	1000	1000	1000	1000

Test Report No. : 238495049i4 001
Customer : Chi Mei Corporation
Test Method : BBP/DBP/DEHP/DIBP - Ref. to IEC 62321-8:2017

2021-01-04

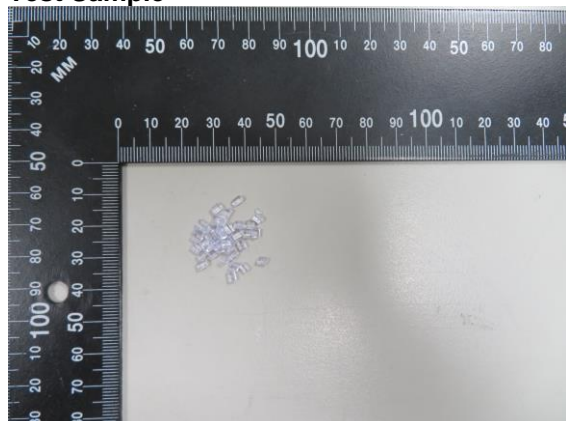
Sample		RL	KIBISAN® PN-127 L150 FG
Material			plastic/transparent
Lab.-No.			TCL201204-77
Benzylbutylphthalate (BBP)	mg/kg	50	< RL
Dibutylphthalate (DBP)	mg/kg	50	< RL
Diethylhexylphthalate (DEHP)	mg/kg	50	< RL
Diisobutylphthalate (DIBP)	mg/kg	50	< RL

Notes:

- < = less than
- RL = Reporting Limit
- n.a. = not applicable
- mg/kg = milligram per kilogram

	BBP	DBP	DEHP	DIBP
Maximum permissible Limit acc. to (EU) 2015/863 (mg/kg)	1000	1000	1000	1000

Test Sample

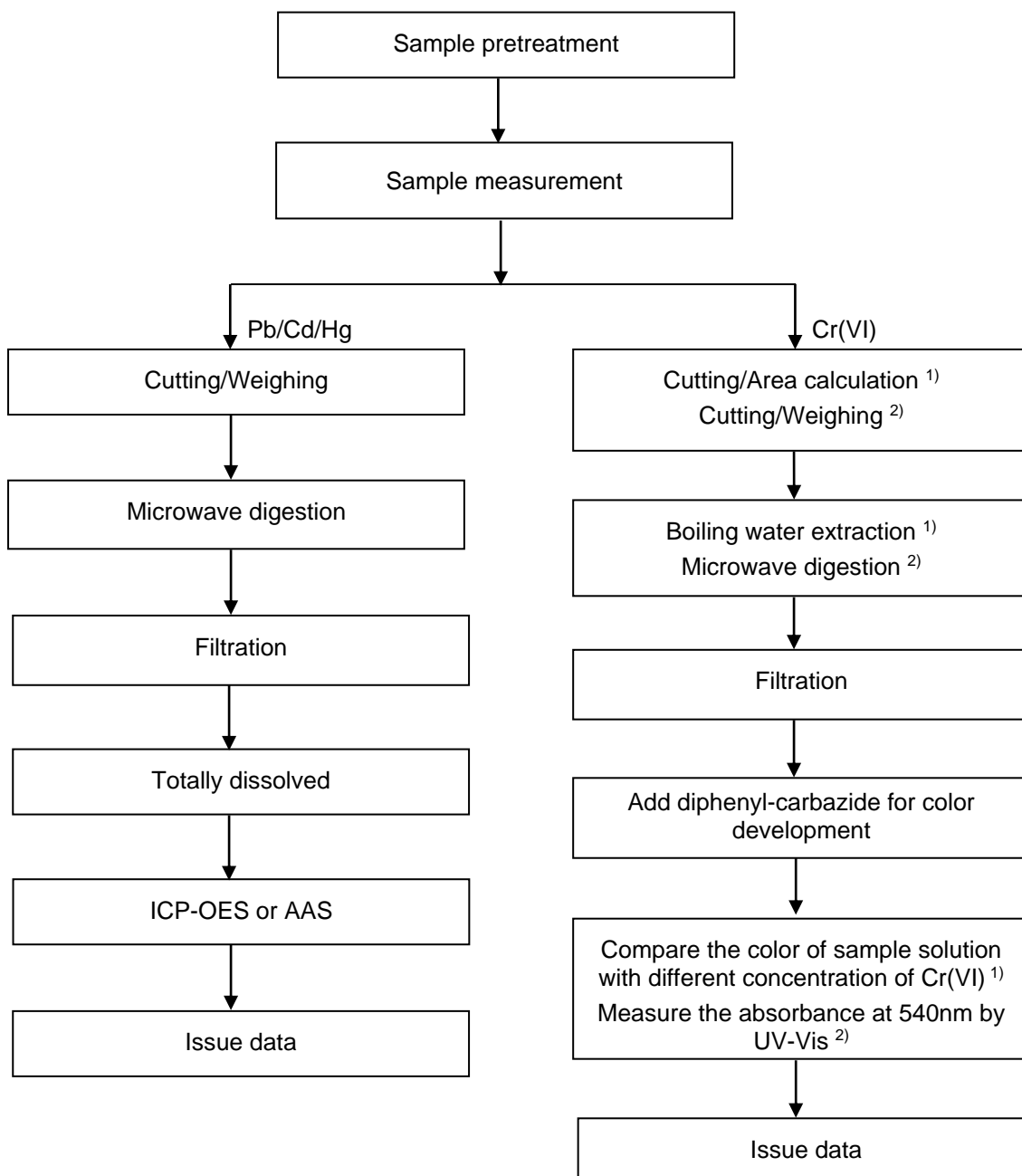


Test Report No. : 238495049i4 001
Customer : Chi Mei Corporation

2021-01-04

Testing procedure:

RoHS (Pb, Cd, Hg, Cr(VI))



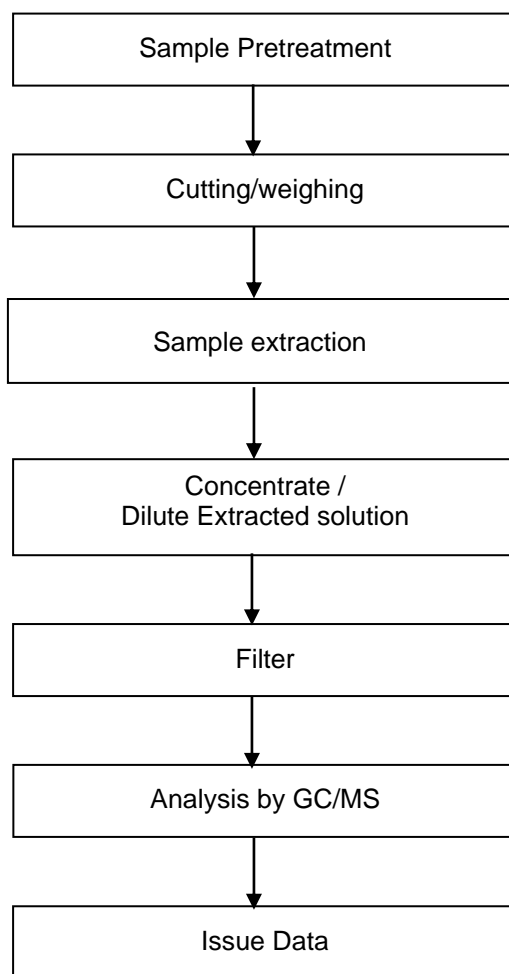
Notes: ¹⁾ For metallic material
²⁾ For non-metallic material

Test Report No. : 238495049i4 001
Customer : Chi Mei Corporation

2021-01-04

Testing procedure:

RoHS (PBBs/PBDEs, DEHP/DBP/BBP/DIBP)



--- End of Test-Report ---