



| | | | | | |
|---|--|---|--|--|--|
| Prüfbericht - Nr.: 0114084381e6 001 <i>Test Report No.:</i> | | | Seite 1 von 5 <i>Page 1 of 5</i> | | |
| Auftraggeber: Chi Mei Corporation <i>Client:</i> No.59-1, Sanjiazi, Rende Dist., Tainan City 71702, Taiwan, R.O.C. | | | | | |
| Gegenstand der Prüfung: ACRYLONITRILE-BUTADIENE-STYRENE COPOLYMER <i>Test Item:</i> | | | | | |
| Bezeichnung: POLYLAC® PA-763 <i>Identification:</i> | | | | | |
| Anlieferungszustand: apparent good <i>Delivery condition:</i> | | Eingangsdatum: 2018-11-29 <i>Date of Receipt:</i> | | | |
| Prüfart: TÜV Rheinland (Shanghai) Co. Ltd. <i>Testing location:</i> | | | | | |
| Prüfgrundlage: According to RoHS (recast): Restriction of the Use of Certain Hazardous Substances in Electrical and Electronic Equipment, 2011/65/EU last amended by (EU) 2015/863: Total Content of Lead, Cadmium, Mercury, Chromium VI, Polybrominated Biphenyls, Polybrominated Diphenyl Ethers; and Benzylbutyl phthalate (BBP), Dibutyl phthalate (DBP), Bis(2-ethylhexyl) phthalate (DEHP), Diisobutyl phthalate (DIBP) <i>Test specification:</i> | | | | | |
| Prüfresultat: According to the kind and extend of tests performed the above mentioned test item passed the test specification. <i>Test result:</i> | | | | | |
| <div style="display: flex; justify-content: space-between;"> <div style="width: 45%;"> geprüft: tested by:  2019-01-02 Fanny Lin /Project Coordinator </div> <div style="width: 45%;"> kontrolliert: checked by:  2019-01-02 Tammy Wang /Assistant Manager </div> </div> | | | | | |
| Sonstiges/ Other Aspects: Test period: 2018-11-29 – 2019-01-02 | | | | | |
| <div style="display: flex; justify-content: space-between;"> <div style="width: 45%;"> Abkürzungen: ok / P = entspricht Prüfgrundlage fail / F = entspricht nicht Prüfgrundlage n.a. / N = nicht anwendbar </div> <div style="width: 45%;"> Abbreviations: ok / P = passed fail / F = failed n.a. / N = not applicable </div> </div> | | | | | |
| <p>Dieser Prüfbericht bezieht sich nur auf das o.g. Prüfmuster und darf ohne Genehmigung der Prüfstelle nicht auszugsweise vervielfältigt werden. Dieser Bericht berechtigt nicht zur Verwendung eines Prüfzeichens.</p> <p><i>This test report relates to the a. m. test sample. Without permission of the test center this test report is not permitted to be duplicated in extracts. This test report does not entitle to carry any safety mark on this or similar products.</i></p> | | | | | |



Test Report No. : 0114084381e6 001
Customer : Chi Mei Corporation
Test Method : Total Cadmium, Lead, Mercury, Chromium
- Ref. to IEC 62321-4:2013 and IEC 62321-5:2013
Chromium (VI)
- For Metal material - Ref. to IEC 62321-7-1:2015
- For Plastic or Electronic material - Ref. to IEC 62321-7-2:2017
- For Leather material - Ref. to EN ISO 17075-1:2017
PBBs, PBDEs - Ref. to IEC 62321-6:2015

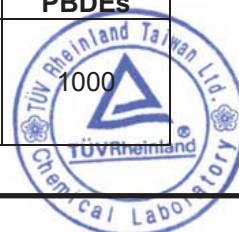
2019-01-02

| Sample Material Lab.-No. | | LoD | POLYLAC® PA-763 plastic/off white TCL181129-47 |
|--|-------|-----|--|
| Cadmium (Cd) | mg/kg | 2 | n.d. |
| Lead (Pb) | mg/kg | 2 | n.d. |
| Mercury (Hg) | mg/kg | 2 | n.d. |
| Chromium VI (Cr VI)** | mg/kg | 8* | n.d. |
| Sum of Polybrominated biphenyls (PBBs) | mg/kg | - | n.d. |
| Monobromobiphenyl | mg/kg | 5 | n.d. |
| Dibromobiphenyl | mg/kg | 5 | n.d. |
| Tribromobiphenyl | mg/kg | 5 | n.d. |
| Tetrabromobiphenyl | mg/kg | 5 | n.d. |
| Pentabromobiphenyl | mg/kg | 5 | n.d. |
| Hexabromobiphenyl | mg/kg | 5 | n.d. |
| Heptabromobiphenyl | mg/kg | 5 | n.d. |
| Octabromobiphenyl | mg/kg | 5 | n.d. |
| Nonabromobiphenyl | mg/kg | 5 | n.d. |
| Decabromobiphenyl | mg/kg | 5 | n.d. |
| Sum of Polybrominated diphenyl ethers (PBDEs) | mg/kg | - | n.d. |
| Monobromodiphenyl ether | mg/kg | 5 | n.d. |
| Dibromodiphenyl ether | mg/kg | 5 | n.d. |
| Tribromodiphenyl ether | mg/kg | 5 | n.d. |
| Tetrabromodiphenyl ether | mg/kg | 5 | n.d. |
| Pentabromodiphenyl ether | mg/kg | 5 | n.d. |
| Hexabromodiphenyl ether | mg/kg | 5 | n.d. |
| Heptabromodiphenyl ether | mg/kg | 5 | n.d. |
| Octabromodiphenyl ether | mg/kg | 5 | n.d. |
| Nonabromodiphenyl ether | mg/kg | 5 | n.d. |
| Decabromodiphenyl ether | mg/kg | 5 | n.d. |

Notes:

- n.d. - not detected
- LoD - Limit of Detection
- mg/kg is equal to ppm (parts per million)
- * method detection limit according to IEC 62321-7-2
- **Once the total Cr content in metal/ plastic or electronic sample is found to be exceeded the limit, the Cr (VI) content will be confirmed with reference to IEC 62321-7-1:2015/ IEC 62321-7-2:2017

| | Cd | Cr(VI) | Pb | Hg | PBBs | PBDEs |
|---|-----|--------|------|------|------|-------|
| Maximum permissible Limit acc. to 2011/65/EU (mg/kg) | 100 | 1000 | 1000 | 1000 | 1000 | 1000 |



Test Report No. : 0114084381e6 001
Customer : Chi Mei Corporation
Test Method : BBP/DBP/DEHP/DIBP - Ref. to IEC 62321-8:2017

2019-01-02

| | | |
|------------------------------------|-----|--|
| Sample Material Lab.-No. | LoD | POLYLAC® PA-763 plastic/off white TCL181129-47 |
| Benzylbutylphthalate (BBP) mg/kg | 50 | n.d. |
| Dibutylphthalate (DBP) mg/kg | 50 | n.d. |
| Diethylhexylphthalate (DEHP) mg/kg | 50 | n.d. |
| Diisobutylphthalate (DIBP) mg/kg | 50 | n.d. |

Notes:

- n.d. - not detected
- LoD - Limit of Detection
- mg/kg is equal to ppm (parts per million)

| | BBP | DBP | DEHP | DIBP |
|--|------|------|------|------|
| Maximum permissible Limit acc. to (EU) 2015/863 (mg/kg) | 1000 | 1000 | 1000 | 1000 |

Test Sample

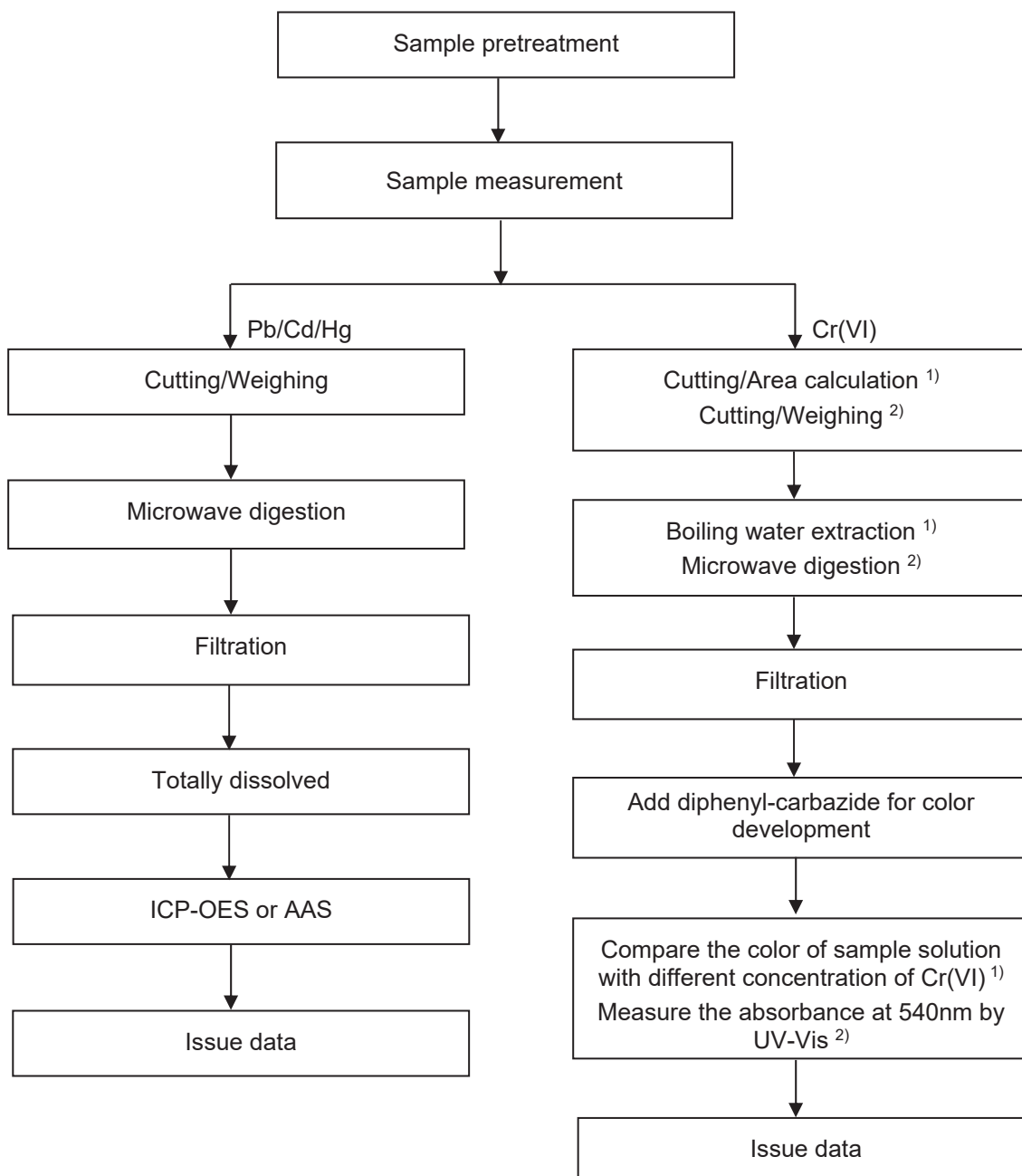


Test Report No. : 0114084381e6 001
Customer : Chi Mei Corporation

2019-01-02

Testing procedure:

RoHS (Pb, Cd, Hg, Cr(VI))



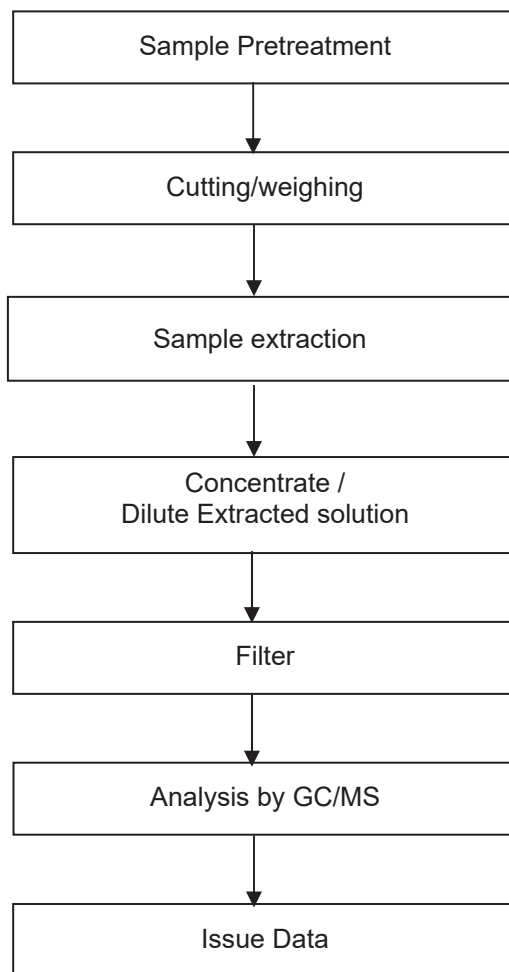
Notes: ¹⁾ For metallic material
²⁾ For non-metallic material

Test Report No. : 0114084381e6 001
Customer : Chi Mei Corporation

2019-01-02

Testing procedure:

RoHS (PBBs/PBDEs, DEHP/DBP/BBP/DIBP)



--- End of Test-Report ---

